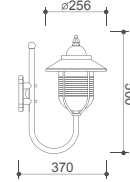


## WMS 275



**Housing** : Die cast aluminium body finished in black color  
**Diffuser** : Clear polycarbonate  
**Cable Entry** : Silicone rubber grommet  
**Painting** : Polyester powder coated  
**Fastening** : Painted hexagonal aluminium screws  
**Mounting** : Plastic bracket is provided for ease installation

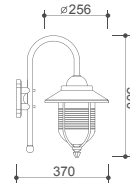


**GLS / E27** | **TCT-EL / E27**  
 60W / 100W | 11W / 15W / 20W  
 (Max length 155 mm.)

## WMS 276

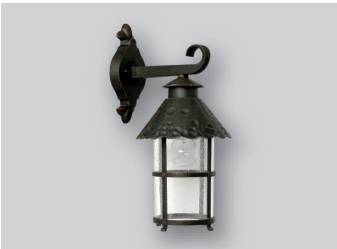


**Housing** : Die cast aluminium body finished in black color  
**Diffuser** : Clear polycarbonate  
**Cable Entry** : Silicone rubber grommet  
**Painting** : Polyester powder coated  
**Fastening** : Painted hexagonal aluminium screws  
**Mounting** : Plastic bracket is provided for ease installation

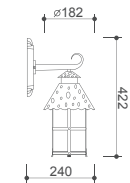


**GLS / E27** | **TCT-EL / E27**  
 60W / 100W | 11W / 15W / 20W  
 (Max length 155 mm.)

## WMS 290



**Housing** : Die cast aluminium body finished in antique brown color  
**Diffuser** : Clear cylindrical seed pattern glass  
**Cable Entry** : Silicone rubber grommet  
**Painting** : Polyester powder coated  
**Fastening** : Painted hexagonal aluminium screws  
**Mounting** : Plastic bracket is provided for ease installation

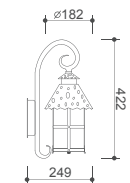


**GLS / E27** | **TCT-EL / E27**  
 60W / 100W | 11W / 15W / 20W  
 (Max length 155 mm.)

## WMS 291



**Housing** : Die cast aluminium body finished in antique brown color  
**Diffuser** : Clear cylindrical seed pattern glass  
**Cable Entry** : Silicone rubber grommet  
**Painting** : Polyester powder coated  
**Fastening** : Painted hexagonal aluminium screws  
**Mounting** : Plastic bracket is provided for ease installation



**GLS / E27** | **TCT-EL / E27**  
 60W / 100W | 11W / 15W / 20W  
 (Max length 155 mm.)

