

# LED Wall Mount (Outdoor)



## Application

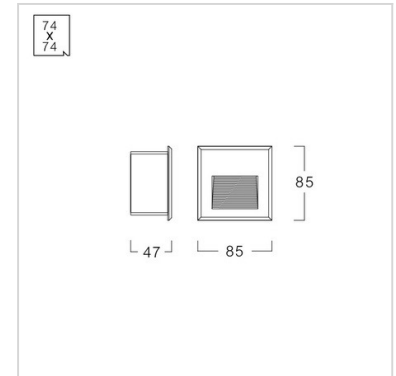
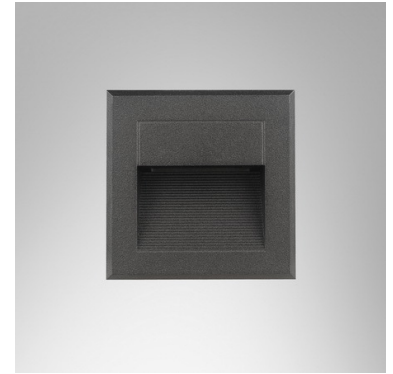
Wall mount luminaire is designed to use for outdoor applications such as walkways, wall illumination, safety applications, etc.

## Specification

<b>Housing</b>	Die-cast aluminium
<b>Finishing</b>	Powder coated in black
<b>Lens</b>	Frosted glass
<b>Gasket</b>	Silicone rubber
<b>Dimension</b>	85x85x47 mm.
<b>Cut Out</b>	74x74x55 mm.
<b>Mounting</b>	Recessed in block out made of polypropylene
<b>Power</b>	3W
<b>Source</b>	LED Module
<b>Lamp Colour</b>	3000K
<b>Luminaire Output</b>	40 lm
<b>Beam Angle</b>	Asymmetrical wide beam
<b>Control Gear</b>	Built-in driver
<b>Power Supply</b>	220VAC 50Hz
<b>IP Rating</b>	65
<b>Luminaire Lifetime</b>	30,000 hrs.
<b>Equivalent</b>	JC 20W

## Ordering Data

Model	Watt
STLL402-3LED	3W



## Related Products



LED-Module

