

LED Batten



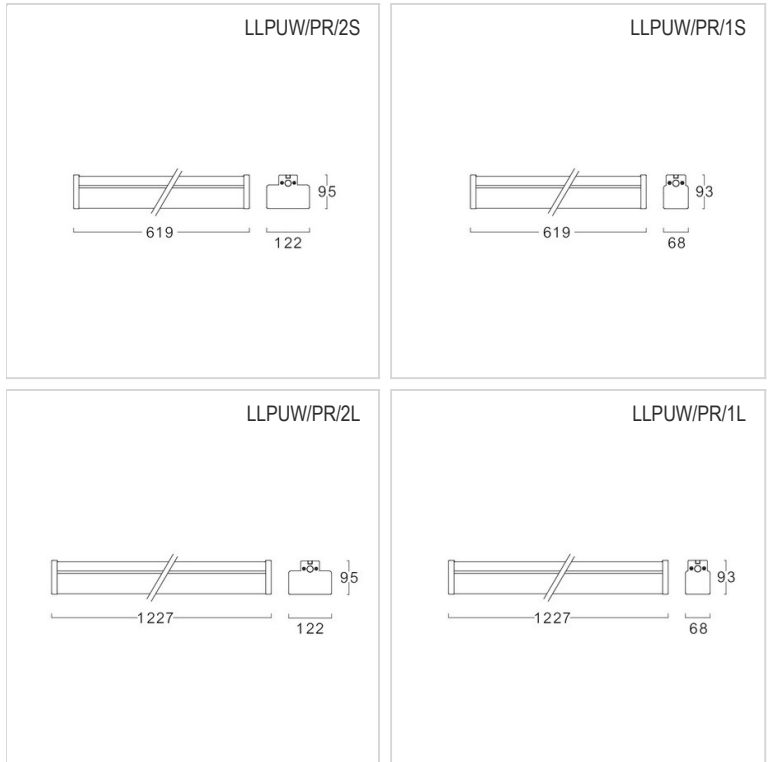
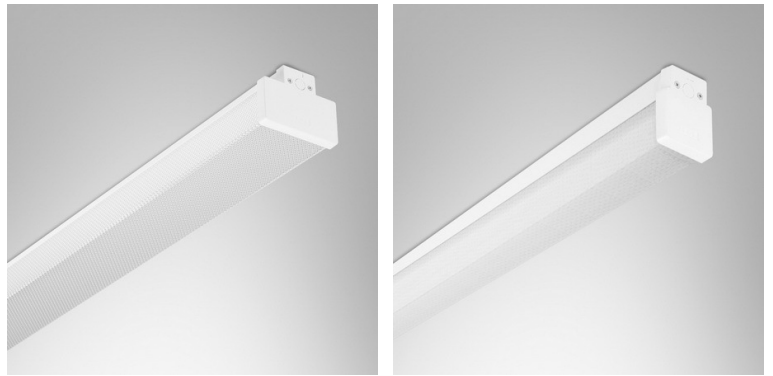
TIS LLPUW/PR

Application

This luminaire is designed to use for convenience stores, discount stores, modern trade stores, factories, schools, storage areas, hospitals, hotels, shopping centers, corridors, industrial areas, car parks, etc.

Specification

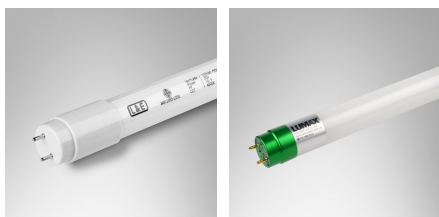
Housing	Die-formed cold roll steel
Finishing	Powder coated in white
Diffuser	Prismatic (Opal, stipple, clear are available as option)
Mounting	Surface or Suspended
Power	1S: 8-10W (1 lamp) 1L: 14-20W (1 lamp) 2S: 16-20W (2 lamps) 2L: 28-40W (2 lamps)
Source	LED-T8
Lamp Holder	G13
Lamp Colour	3000/4000/6500K
Lamp Output	1S: L&E : 8/9W: 1050 lm 1S: LUMAX : 9W: 1050 lm 1L: L&E : 14/16/18W: 2100 lm 1L: LUMAX : 18W: 2100 lm 2S: L&E : 2x8/9W: 2x1050 lm 2S: LUMAX : 2x9W: 2x1050 lm 2L: L&E : 2x14/16/18W: 2x2100 lm 2L: LUMAX : 2x18W: 2x2100 lm
Luminaire Output	1S : 8/9W : 945 lm 1L : 14/16/18W : 1890 lm 2S: 16/18W : 1825 lm 2L: 28/32/36W : 3650 lm
Power Supply	220VAC 50Hz
IP Rating	40
LED Lifetime	LUMAX: 25,000 hrs. L&E: 25,000/50,000 hrs.
Equivalent	8-10W: T5 1x14W/T8 1x18W 14-20W: T5 1x28W/T8 1x36W 16-20W: T5 2x14W/T8 2x18W 28-40W: T5 2x28W/T8 2x36W



Ordering Data

Model	Watt
LLPUW/PR/1S/OT-XXLED-T8	8-10W
LLPUW/PR/1L/OT-XXLED-T8	14-20W
LLPUW/PR/2S/OT-XXLED-T8	16-20W
LLPUW/PR/2L/OT-XXLED-T8	28-40W

Related Products



LED-T8

LED-T8

